

# DEFINITION

- **The term angina pectoris** is applied to various forms of transient chest discomfort that are attributable to insufficient myocardial oxygen.

# TYPES

- STABLE OR TYPICAL ANGINA
- PRINZMETAL'S VARIANT ANGINA(VASOSPASTIC)
- UNSTABLE OR CRESCENDO ANGINA
- ANGINA DECUBITUS(NOCTURNAL ANGINA)

# EPIDEMIOLOGY

- Angina due to ischemic heart disease affects approximately 112 million people (1.6% of the population)
- slightly more common in men than women (1.7% to 1.5%)
- The prevalence of angina rises with increasing age

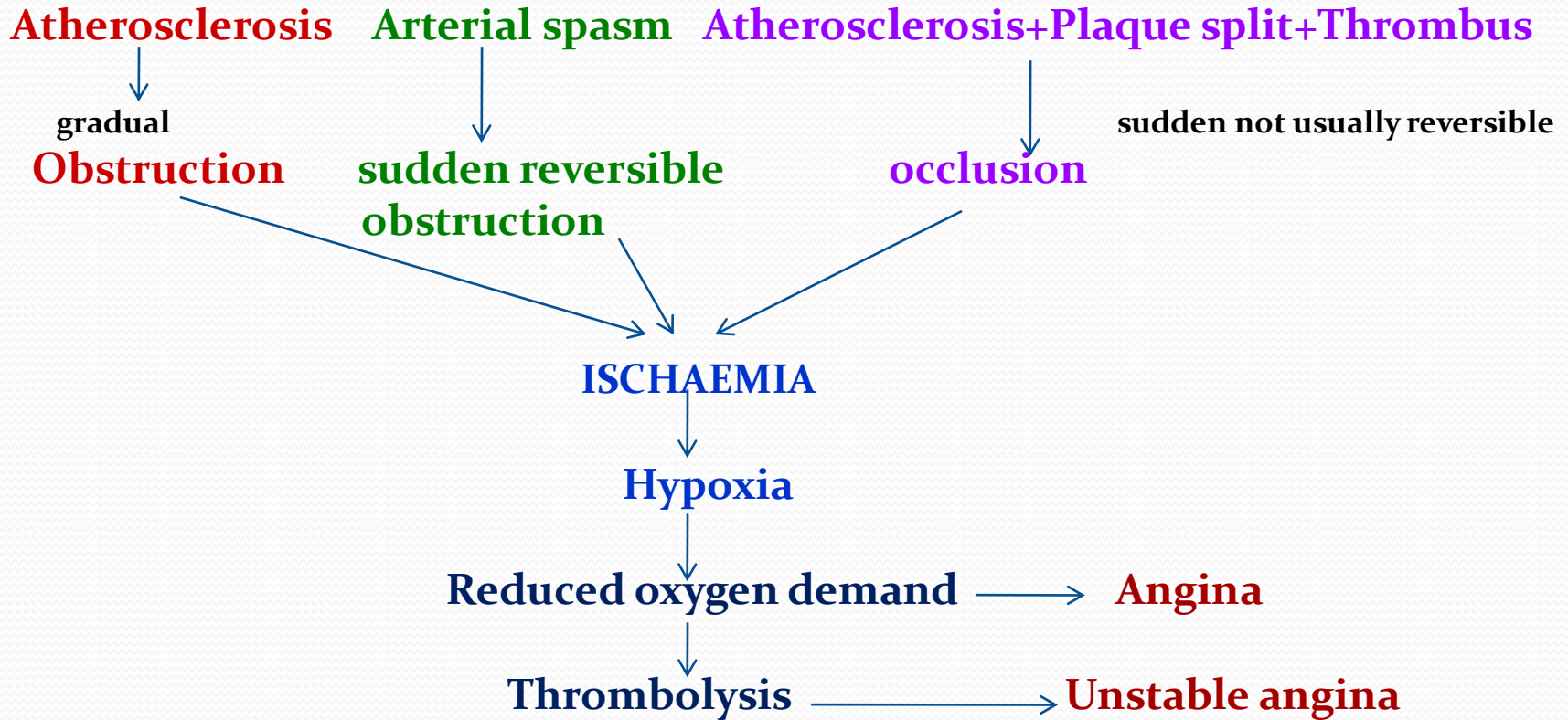
# ETIOLOGICAL FACTORS:

- **Major risk factors**
- **Other medical problems**
- **medications**
- **Other cardiac problems**

# ETIOPATHOGENESIS:

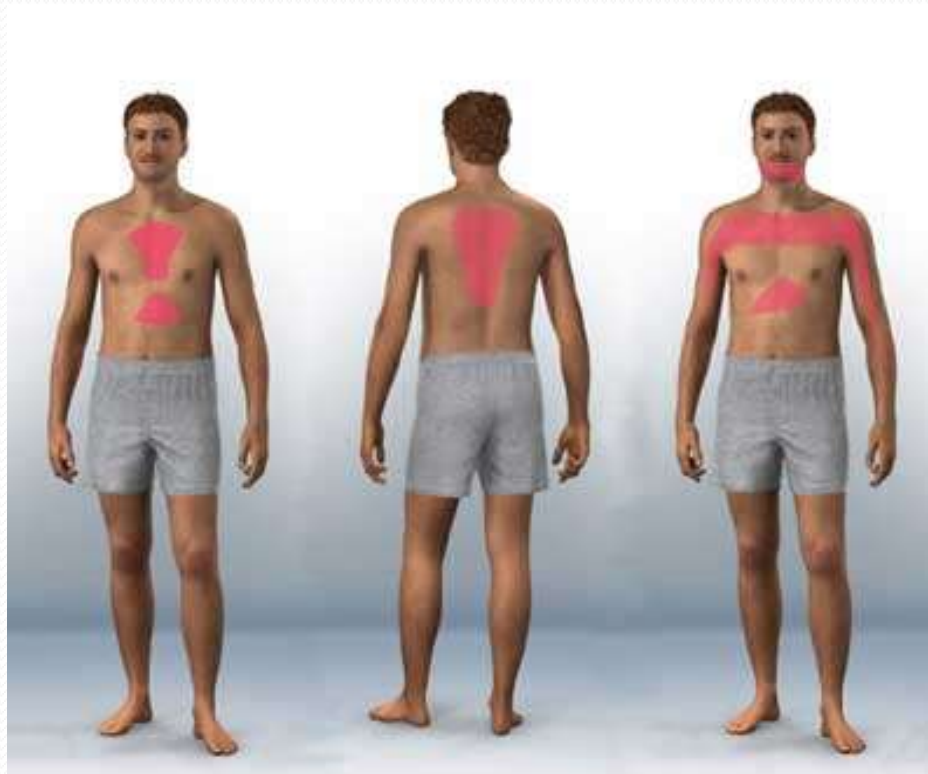
- Coronary Atherosclerosis
- Superadded changes in coronary atherosclerosis
- Non-atherosclerotic causes.

# ● PATHOPHYSIOLOGY



# CLINICAL MANIFESTATIONS

- Chest pain / chest discomfort



Schmerzen bei  
Angina pectoris

hinten

Ausstrahlung

vorn

- 
- **Dyspnea**
  - **Fatigue**
  - **Increased sweating**
  - **Weakness**
  - **pulse rate and the blood pressure increases**
  - **Palpitation**



# DIAGNOSIS:

- EXERCISE TOLERANCE TESTING
- CARDIAC IMAGING
- ECHOCARDIOGRAPHY

# **MANAGEMENT:**

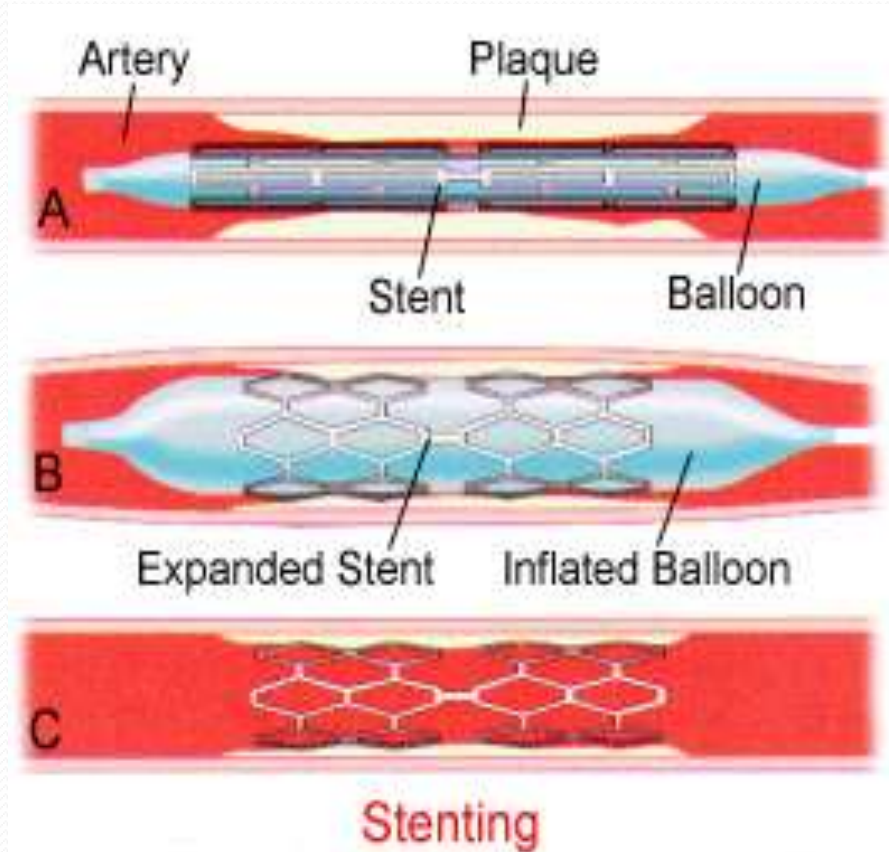
## **1. NON-PHARMACOLOGICAL:**

- ✓ **Counselling and education of patients**
- ✓ **Life style modification**
- ✓ **Smoking cessation**
- ✓ **Avoid Alcohol intake**
- ✓ **Diet and nutrition**
- ✓ **Salt restriction**

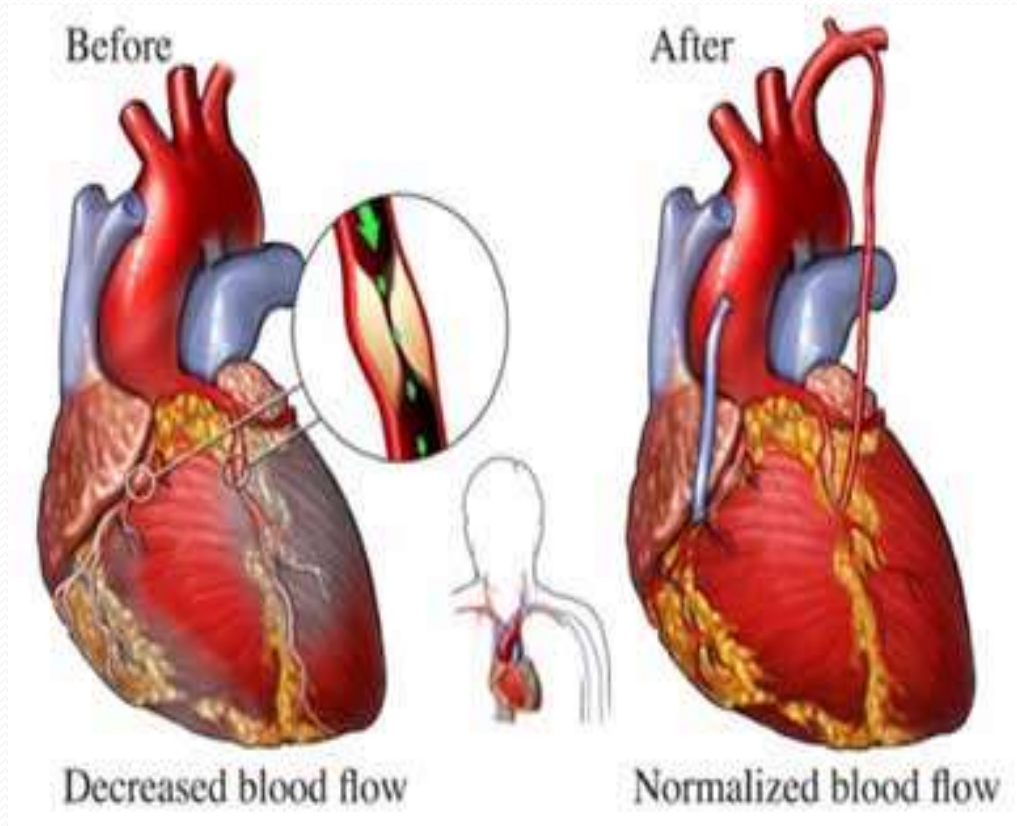
## ● REVASCULARIZATION-

- PCI: Percutaneous coronary intervention
- PTCA: Percutaneous transluminal coronary angioplasty
- CABG: Coronary artery bypass grafting
- PCI versus CABG is the By pass Angioplasty  
Revascularization (BARI)

# PERCUTANEOUS TRANSLUMINAL CORONARY ANGIOPLASTY (PTCA)



# CORONARY ARTERY BYPASS GRAFT (CABG)



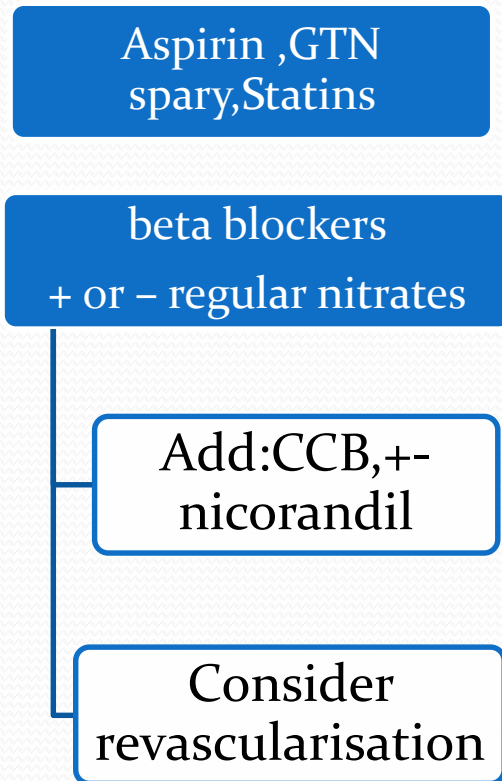
# PHARMACOLOGICAL TREATMENT

## Anti anginal drugs:

- 1) nitrates
- 2) Beta blockers
- 3) calcium channel blockers
- 4) potassium channel opener
- 5) others

# TREATMENT ALGORITHM FOR ANGINA

## Stable angina



## unstable angina

